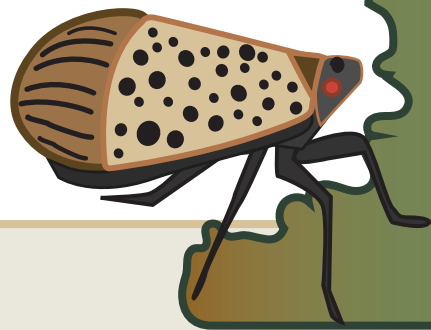




NATURE NATE
Here to explain all things nature!

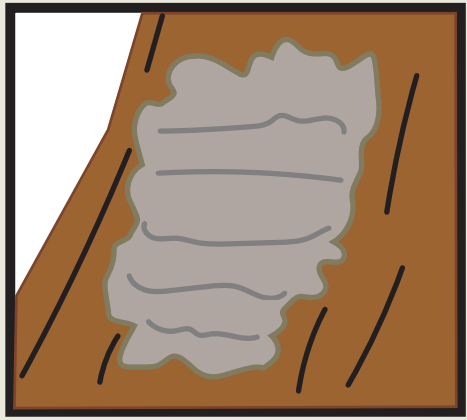
ONLY YOU CAN STOMP LANTERNFLIES!



What is a Spotted Lanternfly?:

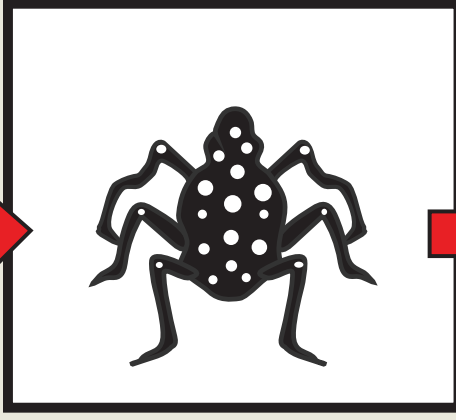
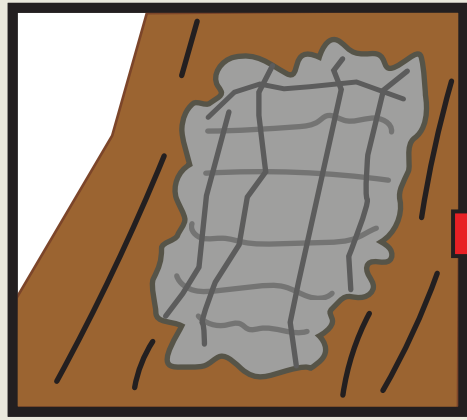
In America, a spotted lanternfly is an invasive species of insect. Invasive insects are not native and have no natural prey or predator. Spotted lanternflies damage our farms, and even the trees and plants in your neighborhood.

Life Stages



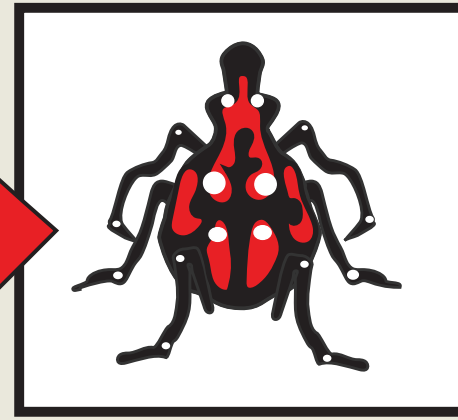
EGG STAGE WET - DRY

From September to May, these eggs can be found on tree bark, rocks, and vine leaves. They have a mud like texture.



EARLY STAGE NYMPH

From May to July, the insect is black with white dots. It can only jump at this stage.



LATE STAGE NYMPH

From July to August, the insect becomes bigger and more red.



ADULT STAGE

From July to December, the spotted lanternfly is red and brown with some black on its lower wings.

TELL A TRUSTED ADULT!

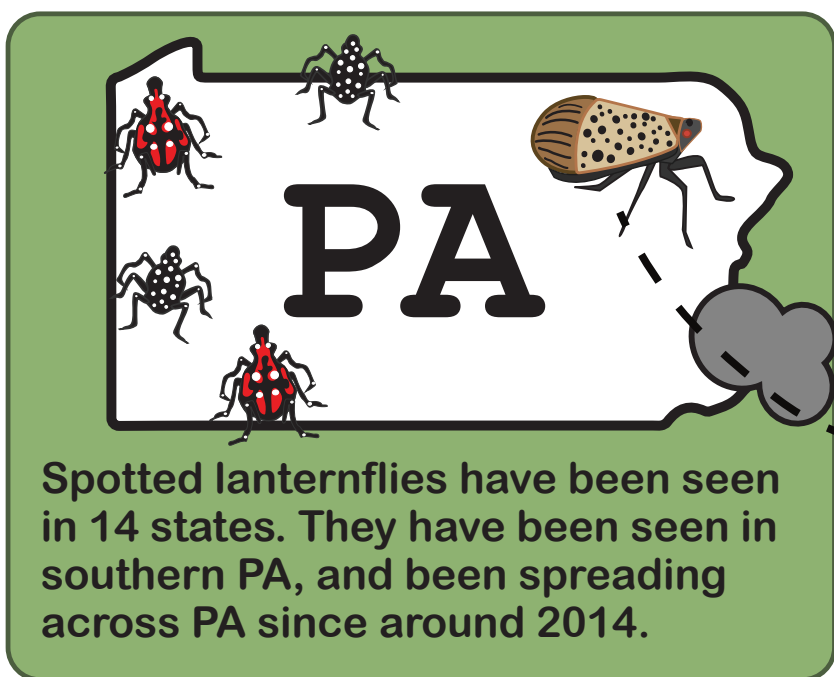
If seen, tell an adult to go to the PennState Extension website, to learn how to remove these eggs!



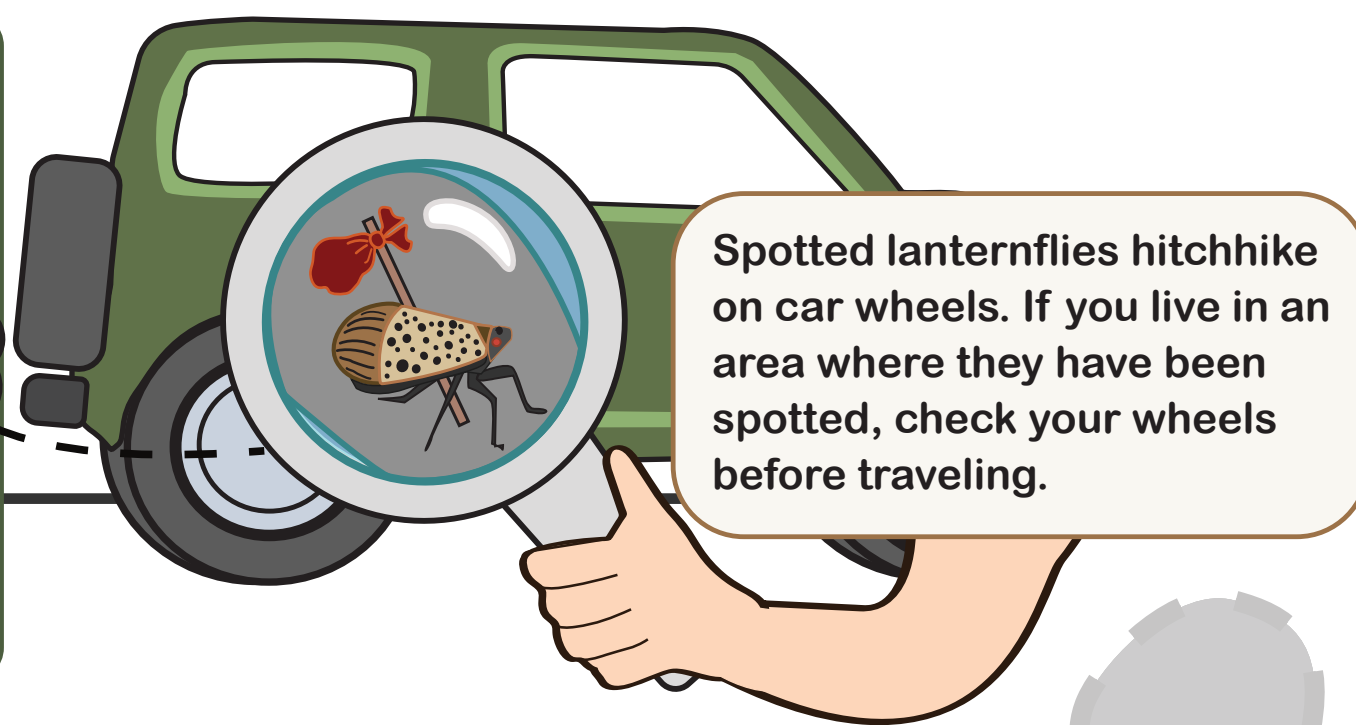
At this stage, the insect is able to fly, rather than just jumping.



Where Have They Been Spotted?

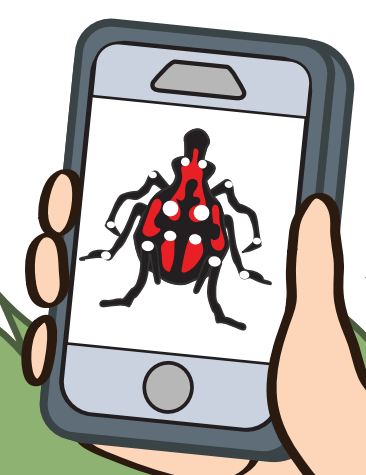


Spotted lanternflies have been seen in 14 states. They have been seen in southern PA, and been spreading across PA since around 2014.



Spotted lanternflies hitchhike on car wheels. If you live in an area where they have been spotted, check your wheels before traveling.

Report



If you see a lanternfly in the PA area, use the QR code to report it. If seen in other states, visit the state's agriculture department website.

Most Important, Stomp The Spread



STOMP!



Or SPRAY, Then STOMP



Spread the word!

The best way to stomp them is by walking towards them as normal, and stomping it as you step.

If you have trouble killing lanternflies, try spraying them before stomping. By spraying them with a mixture of water and dish soap, you can stun the insect.

Stomp the lanternfly spread! Share your knowledge with friends and family!